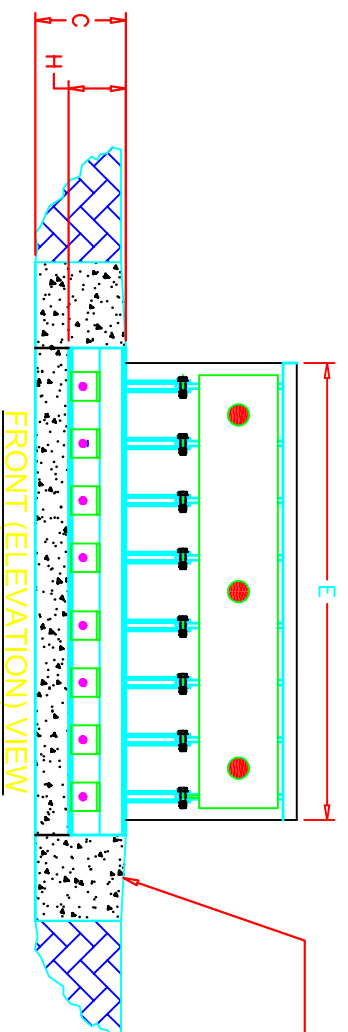


TOP (PLAN) VIEW



DIRECTION OF VEHICLE ATTACK

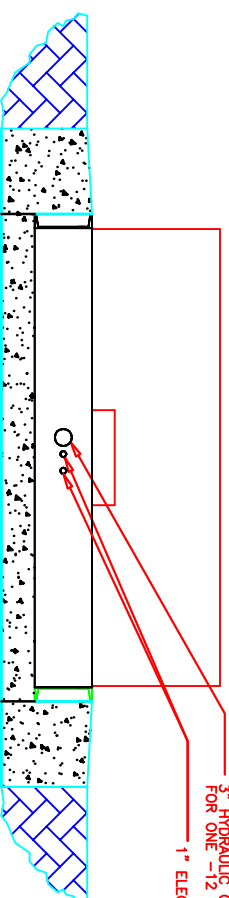


FRONT (ELEVATION) VIEW

BEVEL RUN-OFF SLOPE

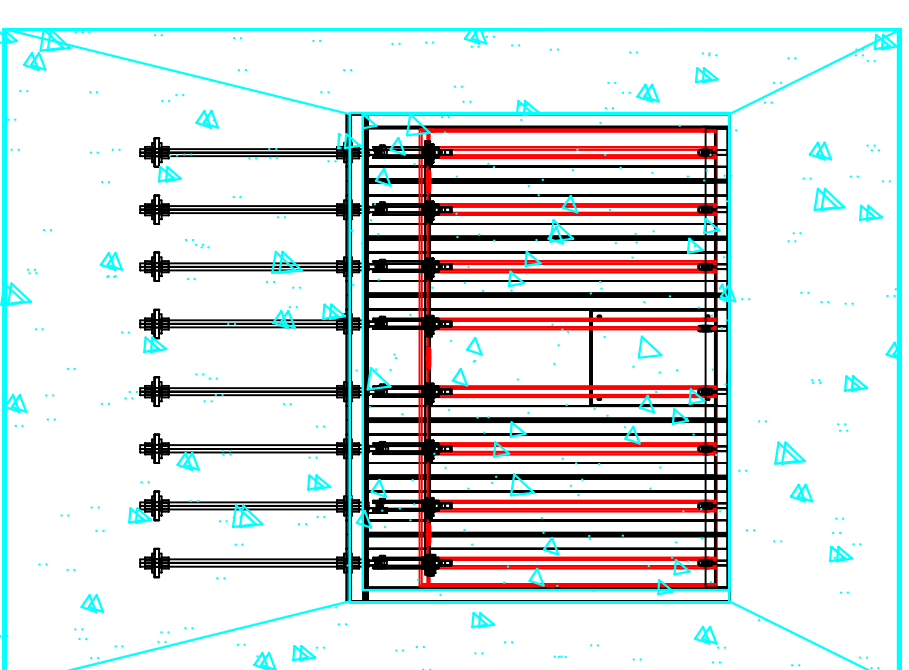
3" HYDRAULIC CONDUIT CONNECTION FOR ONE -12 HOSE AND ONE -8 HOSE  
1" ELECTRICAL CONDUIT CONNECTIONS

BACK (ELEVATION) VIEW

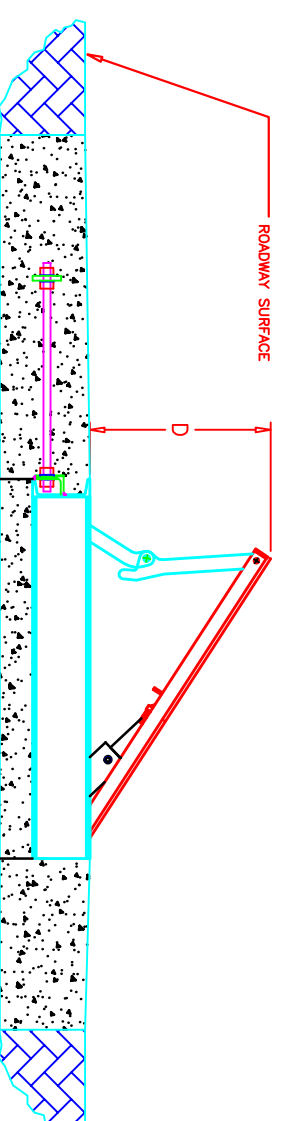


Dimension	A	B	C	D	E	F	G	H
	8' foot	Inch 138.0 mm 3505	Inch 188.0 mm 4775	Inch 19.0 mm 483	Inch 38.0 mm 965	Inch 96.0 mm 2438	Inch 79.7 mm 2025	Inch 102.9 mm 2613
10' foot	Inch 168.0 mm 4267	Inch 176 mm 4470	Inch 19.0 mm 483	Inch 38.0 mm 965	Inch 304.8 mm 79.7	Inch 127.0 mm 3226	Inch 127.0 mm 3226	Inch 12.00 mm 305
12' foot	Inch 198.0 mm 5029	Inch 164 mm 4166	Inch 19.0 mm 483	Inch 38.0 mm 965	Inch 144.0 mm 3658	Inch 79.7 mm 2025	Inch 151.0 mm 3835	Inch 12.00 mm 305
14' foot	Inch 228.0 mm 5791	Inch 152 mm 3861	Inch 19.0 mm 483	Inch 38.0 mm 965	Inch 168.0 mm 4267	Inch 79.7 mm 2025	Inch 175.0 mm 4445	Inch 12.00 mm 305

1. The Sentinel is K12 certified by the U.S. Department of State (DOS).
2. Black paint with yellow stripes is standard. Custom specified paint colors are available.
3. Heaters are available for cold weather applications.
4. Hydraulic Power Unit (HPU) and Operator Control Panels are not shown.
5. Weather-proof HPU enclosure is standard.
6. Traffic signal lights, warning lights, vehicle detector loops, and other accessories are available.
7. Construction and installation by others, such as concrete foundation, rebar, roadway surface, conduit, wiring and hydraulic hoses.



SIDE (ELEVATION) VIEW



ROADWAY SURFACE

PROPRIETARY INFORMATION

This drawing is the proprietary property of AMERISTAR, Tulsa, OK and must not be duplicated or used in whole or in part for the making of drawings, prints or parts to the detriment of, or harm to, the owner. In accepting this drawing, the recipient agrees to keep the information contained confidential.

**AMERISTAR**<sup>®</sup>

1555 N. Mingo  
Tulsa, OK 74116  
1-888-333-3422  
www.ameristarforce.com

TITLE: SENTINEL 4 VIEW

DATE: SCALE: SHEET: 1/1

DRN BY: CHK BY: xxxxxxxx REV: 2

DRAWING NO: